



Port of Newcastle Berths (PON)
 Mayfield 4 -Quayside Close Mayfield – Enter via Selwyn St
 Dyke 1 & 2 and Channel Berth, Dyke Rd – West Basin, Ballast Rd
 Entry via gatehouse on Engine House Rd

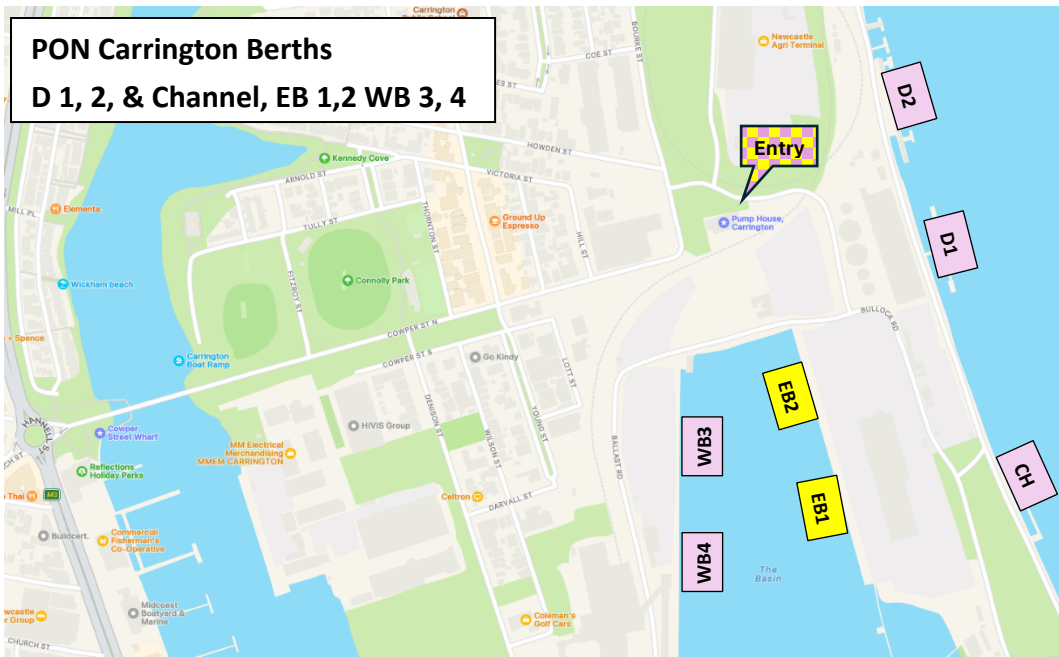
Port Waratah Coal Services (PWCS)
 Dyke 4 & 5 – Dyke Rd via Selwyn St, Mayfield
 Kooragang 4,5,6, and 7 – Entry via Heron St, Kooragang

Newcastle Coal Infrastructure Group (NCIG)
 Kooragang 8,9 and 10 – Entry via Cormorant Rd

Stolthaven (& Koppers)
 Mayfield 7, Steel Works Rd – Entry via Ingall St, Mayfield

Linx Cargo Care
 East Basin, Ballast Rd - Entry via gatehouse on Engine House Rd

**PON Carrington Berths
D 1, 2, & Channel, EB 1,2 WB 3, 4**



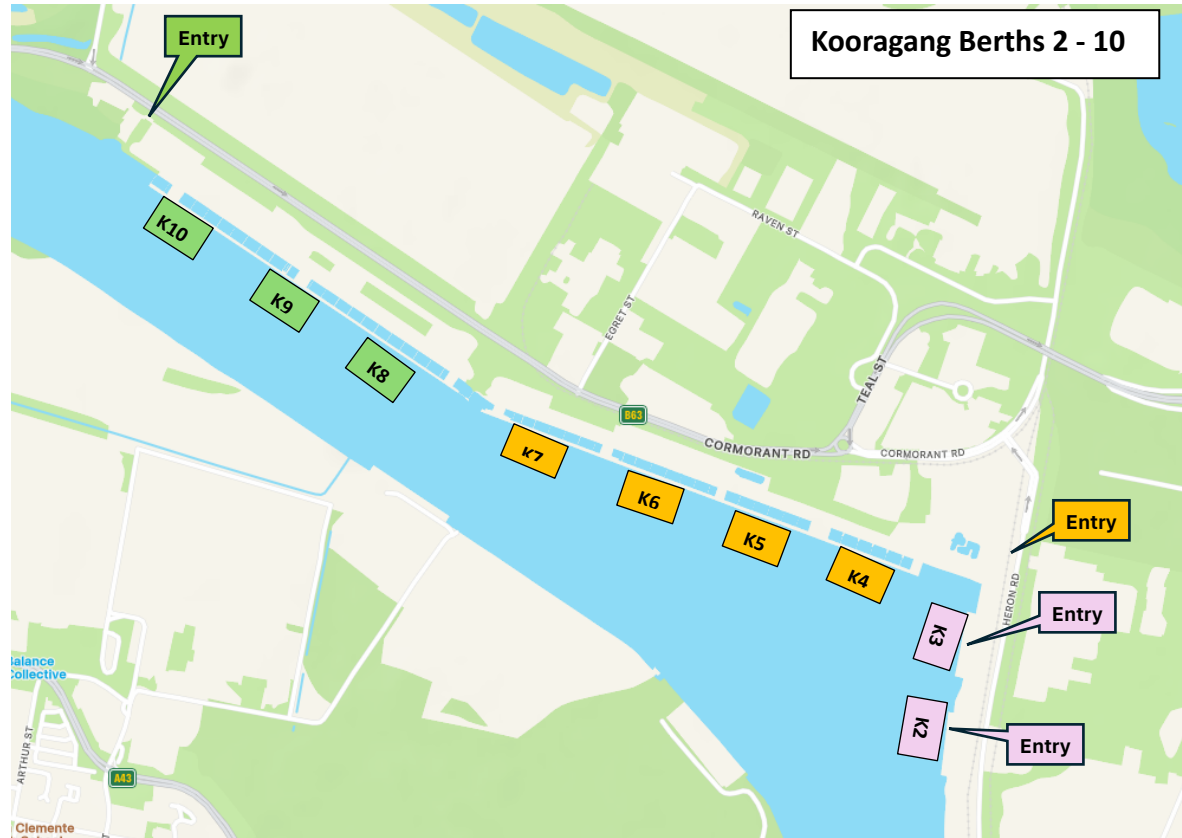
Stolthaven & Koppers Berths M7



**PWCS Berths D4, D5
PON Berth M4**



Kooragang Berths 2 - 10



Port of Newcastle Berths